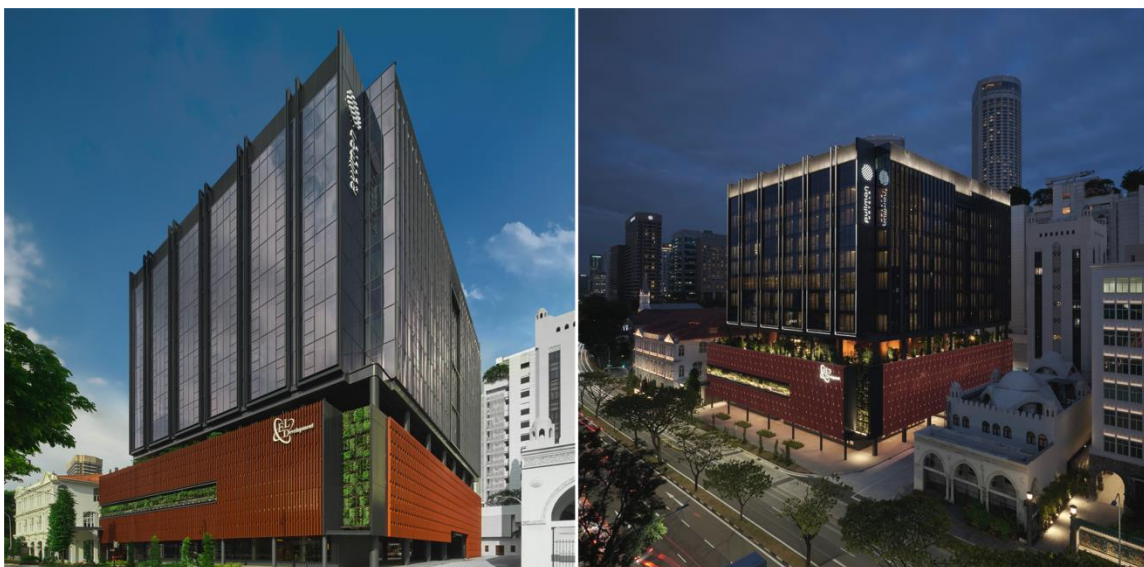


EMBARGOED UNTIL 25 SEPTEMBER 2023, 12PM SGT (GMT+8)

The ultimate playground for modern travelers: Pullman Singapore Hill Street officially opens 1 October 2023

Housed along Singapore's downtown core, the latest Pullman property is set to become the epicenter of experiences with its design-led and forward-thinking approach to hospitality



Above: The day and night facade of Pullman Singapore Hill Street

SINGAPORE, 25 SEPTEMBER 2023 – Pullman Hotels & Resorts, a premium brand part of global hospitality player **Accor**, is pleased to announce that the highly anticipated **Pullman Singapore Hill Street** will start welcoming guests from **1 October 2023**.

Developed and owned by **EL Development Pte Ltd**, a leading Singapore-based real estate and investment company, the new 5-star hotel will make its mark as the company's **first foray** into hotels with the most story-led property yet under the Pullman brand. Centrally located, Pullman Singapore Hill Street is poised to become the newest gathering point for modern nomads, who can call its 350 rooms their base, complemented by three sharp culinary concepts to explore, and a dynamic network of partnerships as a platform for some of Singapore's cult favorite brands.

"With a prime position at the intersection of culture, entertainment, and business, we are honored to be the first Pullman in the world that pays homage to the brand's roots in luxury train travel—from the keen design details that represent a modern take on the bygone era, to the spirit of high touch hospitality, and exciting journeys through thoughtfully curated spaces—the true meaning of innovative hospitality today is captured in a singular property, perfect for adventurous travelers," says **Mazen Abilmona, General Manager of Pullman Singapore Hill Street**.

Designed by Singapore's **DP Architects**, Pullman Singapore Hill Street is envisioned to be the first property that translates the George Pullman sleeping car past to a modern context—whether it's from afar or the moment guests step into the lobby, up to the tiniest details. Built from the ground-up with cues from its surroundings, the property stands out as a visionary future of the locale with its contrast of terracotta-colored tiles, pockets of lush greenery and an extensive glass façade that allows clear views from every room.

A THEMED JOURNEY FROM ARRIVAL TO ROOM



Clockwise above from top-left: The driveway, lobby feature wall, lobby elevators

Upon arrival, guests are first welcomed by Pullman Porters and a reproduction of a classic Pullman Sleeping Cabin, which functions as a luggage holding area. Enter the lobby and be greeted by a marble and wood-clad walkway flanked by a floor-to-ceiling installation of vintage carriers that lead the way to the antique-style elevators.

After a seamless check-in via automated kiosks or at the front desk, a hallway of custom carpets depicting the Singapore map will lead guests into a variety of **350 rooms and suites** offering views such as Fort Canning, the hotel swimming pool or Marina Bay.

Iconic to Pullman are the **Pullman Porters** who are always on standby to go the extra mile for guests. Primarily stationed at the lobby, the Pullman Porters are often walking through shared spaces to ensure that guests' needs are swiftly taken care of; they also serve as the ultimate local insiders with a pulse on what's on in the city at any time, can offer advice on places to visit, and if so desired, can even create a customized itinerary for guests.

ROOMS THAT ARE OPTIMIZED TO ENERGISE & INSPIRE

Modeled after private railroad cabins, each room comes furnished with plush bedding, an open-concept wardrobe, dedicated workspaces, and a modular armchair that extends into a single bed. Harking back to its origins are polished fixtures and brass linings against dark wood with vintage accents to convey a sense of adventure. All rooms are also equipped with smart technology to customize functions from lighting to temperature, Nespresso machines and a Grohe faucet for filtered water.



Clockwise above from left: Studio Suite with Pool View, Deluxe Room, Deluxe Room with Murphy Bed

Sized at 25m², the Deluxe and Executive Rooms offer smartly optimized layouts for all guests, with the latter situated on higher floors for sweeping views of the cityscape. Anchored as the definitive stay, the ultra-premium Studio Suite (33m²) houses additional amenities that include a bathtub, sofa seating, Nespresso Creatista Plus and a true tankless filtration system by Wells' Singapore that dispenses hot or chilled water.

The clever use of Murphy beds strategically placed in rooms offers guests a flexible space that could transition seamlessly from living area to bedroom. For the ultimate balance of work and leisure, guests can opt for the Executive Suite that combines a Studio Suite with a Murphy bedroom (Executive Room or Deluxe Room). Family or group stays will have the option of connected rooms with options of King-sized or twin beds.

FACILITIES ACROSS THE SPECTRUM OF BUSINESS & LEISURE

Pullman's legacy espouses inspiring stays, and the new property upholds that promise with a variety of facilities geared for today's travelers. Designated as the hotel's recreational zone, the 3rd floor houses multiple spaces, such as an **Executive Lounge** exclusive to Executive Room and Studio Suite guests, as well as members of ALL-Accor Live Limitless, with Platinum status and above. Dynamic function rooms, including the **Iron Duke**, **Shimbashi**, **Grand Central** and **Oculus** to cover events across the scale of intimate meetings to social celebrations.

Beckoning guests to cool off is the outdoor **Swimming Pool**—replete with cabanas and a jacuzzi—to soak up rays or read a book between splashes. Guest looking to stay on top of their workout regime can head to the **Power Fitness** gym to utilize machines by Concept 2, with the option of personal training and physiotherapy with experts from **Strength Clinic Academy**.



Clockwise above from top-left: Power Fitness, Swimming Pool, Executive Lounge

Taking inspiration from Fort Canning are cascading walls of lush greenery for guests in courtyard-facing rooms. Watered by an intelligent, regulated irrigation system for sustainable water management, the walls exude a calm ambiance ideal for daytime lounging that illuminates at night. For a brief respite from a hectic day, the **Chef's Garden** provides a soothing company of fresh herbs and edible flowers, used as garnishes across the hotel's dining concepts.

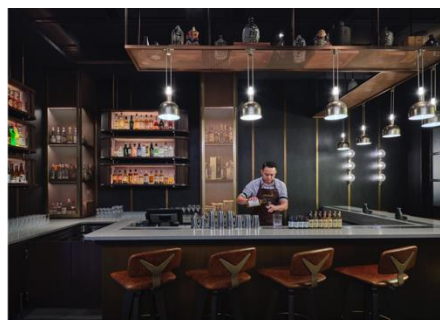
AN EXPLORATION OF GLOBAL CUISINES

Pullman Singapore Hill Street is set to become the place for both locals and travelers to discover the best cosmopolitan flavors throughout three distinct dining destinations.

Set on the ground floor, **Madison's** captures a quintessential All-American deli with its repertoire of New York style bagels, burgers, and sandwiches. Passers-by or residents in need of a quick bite can snatch up coffee sourced from local purveyors at **Sarnies** and sandwiches made using naturally leavened breads by **Starter Lab Bakery** at the Grab-and-Go counter.

In the middle of Madison's is the Porter Lounge, which stands out as the centerpiece with its golden brass cabin. Intended as a semi-private dining and meeting space, the lounge is flanked by an open cabinet of vintage curiosities and barware conducive for a caffeine fix or casual catchups. The Porter Lounge is also where visitors can indulge in a refined **Signature Dilmah Afternoon Tea that is set for launch in March 2024**.

Hidden behind a discreet door right by the counter is **MOGA**, a modern Japanese Izakaya meets cocktail bar. Scheduled to launch in November 2023, MOGA will offer guests a taste of life's pleasures, where they can unwind over inventive sharing plates, expertly crafted cocktails, and curated sake lists.



Clockwise above from left: Porter Lounge, MOGA's Bar Counter, Madison's Grab & Go Counter

Nested atop the roof to bring stunning views facing Marina Bay Sands, visitors are presented with **El Chido**, a Mexican-themed swim-up bar. Flaunting an infinity swimming pool and entirely accessible to the public, El Chido evokes the feel of summer get-aways with Mexican and South American dishes, smashable cocktails and a backdrop of punchy Latino beats in collaboration with **DJ-Dispensary**, perfect for festive gatherings.

A COMMITMENT TO SUSTAINABILITY

Pullman Singapore Hill Street maintains a strong commitment to sustainability and has woven specific features and eco-friendly directives across every aspect of operations. For conscious maintenance, solar panels are installed on the roof to power corridor lights in addition to a programmed irrigation system that ensures efficient water management, releasing precise amounts at determined times to sustain pockets of greenery.

Eradicating single-use plastics across all interactions, every room includes water filters and refillable bathroom amenities, along with fully digitized self-check-in and paperless transactions. Upon detecting guest exits, in-room sensors will automatically reverse into energy-saving mode that switches off lights, television and activates aircon temperature control. To minimize food waste, the hotel has also partnered with food rescue group **Divert for 2nd Life**, which will redistribute surplus to its network of beneficiaries.

THE JUNCTION TO EXPLORE THE BEST OF SINGAPORE

*"The idea of developing a hotel is something that has always been hovered, but it never clicked until I experienced Pullman for myself around the world," says **Lim Yew Soon, Managing Director, EL Development Pte Ltd.** "What drew me in was the brand's free-spirited expression which gave us the liberty to get creative and mold it into the ideal home away from home. Working towards that vision, the property turned out exactly as we dreamed it to be with a playful flexibility that is always exciting, and I'm incredibly excited for guests to experience our first hotel", he adds.*

Conveniently situated between Singapore's commercial districts, entertainment precincts, and cultural hubs and just a 5-minute walk to City Hall MRT Interchange, the hotel puts guests at the heart of the city's happenings. Bringing forward a centralized approach that merges exceptional dining, ever-changing

experiences and rejuvenating stays in one building, the new Pullman Singapore Hill Street is set to steer itself into the ideal base for today's global nomads.

PERKS FOR THE FIRST GUESTS

Pullman Singapore Hill Street is now taking reservations for October 2023 and beyond. In celebration of its momentous opening, guests can take advantage of an exclusive offer during the first two months of operations (valid until 30 November 2023).

Members of ALL - Accor Live Limitless:

- 10% savings on room rate based on best available rates.
- Complimentary buffet breakfast for two persons daily
- S\$28 Nett F&B dining credits per room daily that can be utilized across in-house restaurants
- Child below 6 years old, sharing existing room enjoys complimentary breakfast

Accor Plus Members:

- 20% savings on room rate based on best available rates.
- Complimentary buffet breakfast for 2 persons daily
- S\$28 Nett F&B dining credits per room daily that can be utilized across in-house restaurants
- Child below six years old, sharing existing room enjoys complimentary breakfast

****Notes:***

- *ALL - Accor Live Limitless membership is complimentary for all members. To register, please visit: <https://bit.ly/3sIZGwz>*
- *Accor Plus membership requires a registration fee of S\$418 per year to unlock instant perks*

For more information, please visit <https://www.pullmansingaporehillstreet.com/>.
Or email pullman.singaporehillstreet.enquiries@accor.com.

Pullman Singapore Hill Street is located at 1 Hill Street, Singapore 179949.

To download press images, click here: <https://bit.ly/pullman-sg-hill-street-images>
To download press kit, click here: <https://bit.ly/pullman-sg-hill-street-presskit2023>

###

About Pullman

Pullman Hotels & Resorts sets a new tempo in global travel and living, delivering an inspiring, energizing and enriching experience to new entrepreneurs. Pullman welcomes guests with the space they need to focus, work and play. Forward-thinking, hyper-connected and with a passion for art and fitness, Pullman retains the adventurous spirit and open-minded ambition that drove it to become a pioneering travel brand over 150 years ago. Today, Pullman features more than 150 properties in vibrant and cosmopolitan destinations around the world, including flagship properties such as Pullman Paris Bercy, Pullman Suzhou Zhonghui in Greater China and Pullman Maldives Maamutaa. Pullman is part of Accor, a world leading hospitality group counting over 5,500 properties throughout more than 110 countries, and a participating brand in ALL - Accor Live Limitless – a lifestyle loyalty program providing access to a wide variety of rewards, services and experiences.

pullman.accor.com | all.accor.com | group.accor.com



About EL Development Pte Ltd

EL Development Pte Ltd, established in 2007, is a Singapore-based real estate development and investment company. Over the years, EL Development has risen to prominence in the dynamic property market, gaining recognition for its dedication to excellence and innovation. Their impressive list of awards and recognitions, including Asia Pacific Property Awards and FIABCI World Prix d'Excellence Awards, highlights their commitment to setting industry benchmarks. EL Development's portfolio comprises diverse residential and industrial developments, such as "Pullman Residences Newton," "Parc Riviera," and "Symphony Suites," reflecting their dedication to crafting luxurious and sustainable living and working spaces. With a vision to redefine living and working environments, EL Development remains steadfast in its pursuit of excellence, creativity, and exceeding expectations.

For the latest updates, visit their official website at www.eldev.com.sg.

Press Contacts

Charissa Guan

Co-Founder
bSIDE
charissa@bside.agency
+65 9853 7295

Messiah Abalos

Senior Consultant
bSIDE
messiah@bside.agency
+65 98261652

Sangeetha Kannan

Content & Communications Lead
bSIDE
sangeetha@bside.agency
+65 8769 5324

Annabelle Mak

Marketing Communications Manager
Pullman Singapore Hill Street
annabelle.mak@accor.com
+65 9187 1604